

# Deep learning Enables Accurate Diagnosis of Novel Coronavirus (COVID-19) with CT images

Ying Song<sup>†</sup>, Shuangjia Zheng<sup>†</sup>, Liang Li<sup>†</sup>, Xiang Zhang<sup>†</sup>, Xiaodong Zhang, Ziwang Huang, Jianwen Chen, Ruixuan Wang, Huiying Zhao, Yutian Chong, Jun Shen\*, Yunfei Zha\*, Yuedong Yang\*

**Abstract**—A novel coronavirus (COVID-19) recently emerged as an acute respiratory syndrome, and has caused a pneumonia outbreak world-widely. As the COVID-19 continues to spread rapidly across the world, computed tomography (CT) has become essentially important for fast diagnoses. Thus, it is urgent to develop an accurate computer-aided method to assist clinicians to identify COVID-19-infected patients by CT images. Here, we have collected chest CT scans of 88 patients diagnosed with COVID-19 from hospitals of two provinces in China, 100 patients infected with bacteria pneumonia, and 86 healthy persons for comparison and modeling. Based on the data, a deep learning-based CT diagnosis system was developed to identify patients with COVID-19. The experimental results showed that our model could accurately discriminate the COVID-19 patients from the bacteria pneumonia patients with an AUC of 0.95, recall (sensitivity) of 0.96, and precision of 0.79. When integrating three types of CT images, our model achieved a recall of 0.93 with precision of 0.86 for discriminating COVID-19 patients from others. Moreover, our model could extract main lesion features, especially the ground-glass opacity (GGO), which are visually helpful for assisted diagnoses by doctors. An online server is available for online diagnoses with CT images by our server (<http://biomed.nscg-gz.cn>). Source codes and datasets are available at our [GitHub](#).

**Index Terms**—COVID-19, deep learning, pneumonia diagnosis, weakly supervised learning.

## 1 INTRODUCTION

In late December, 2019, a cluster of pneumonia cases were reported with unknown etiology [1]. From their lower respiratory tract samples, one kind of novel coronavirus was revealed through deep sequencing, which resembled severe acute respiratory syndrome coronavirus (SARS-CoV) [3], and is currently named as the 2019 novel coronavirus (COVID-19) by the World Health Organization (WHO) [2]. The COVID-19 is a beta-CoV of group 2B with at least 70% similarity in genetic sequence to SARS-CoV [5] and is the seventh member of the family of enveloped RNA coronavirus to infect humans [6]. Outbreaks in healthcare work-

ers and families indicated human-to-human transmissions [1], [4]. Since January 17, the confirmed cases dramatically increased, and COVID-19 has been designated as a public health emergency of international concerns by WHO. As of Oct 10, 2020, China has documented over 90000 confirmed cases with the death toll rose to 4700, and the world totally identified more than 36 million confirmed cases with over one million deaths. The COVID-19 has posed significant threats to international health [7].

The spectrum of this disease in humans is yet to be fully determined. Signs of infection are nonspecific, including respiratory symptoms, fever, cough, dyspnea, and viral pneumonia [1]. With the daily increase in the number of newly diagnosed and suspected cases, the diagnosis has become a growing problem in major hospitals due to the insufficient supply of nucleic acid detection boxes and limited detection rates in the epidemic area [8]. Computed tomography (CT) and radiography techniques have thus emerged as integral players in the preliminary identification and diagnosis of COVID-19 [9], [10], [11]. However, the overwhelming patients and relatively insufficient radiologists led to high false positive rates [11]. Advanced computer-aided lung CT diagnosis systems are urgently needed for accurately confirming suspected cases, screening patients, and conducting virus surveillance.

With the rapid development of artificial intelligence, computer vision techniques, originally used for classifications of general images, have been applied to medical images including CT images [21]. Among existing techniques, convolutional neural network (CNN) [27] is a widely used feed-forward artificial neural network, base on which many models have shown great promise in capturing feature representations [13]. However, these general models are not

- Y. Song, S. Zheng, J. Chen and Y. Yang are with the National Supercomputer Center in Guangzhou, Sun Yat-sen University, Guangzhou 510006, China.  
E-mail: {songy75, zhengshj9, chenjw48}@mail2.sysu.edu.cn, yangyd25@mail.sysu.edu.cn.
- L. Li and Y. Zha are with the Department of Radiology, Renmin Hospital of Wuhan University, Wuhan 430060, China.  
E-mail: liliao82@163.com, zhayunfei999@126.com.
- X. Zhang and H. Zhao are with the Department of Radiology, Sun Yat-Sen Memorial Hospital, Sun Yat-Sen University, Guangzhou 510530, China.  
E-mail: {zhangx345, zhaohy8}@mail.sysu.edu.cn.
- XD. Zhang and Y. Chong are with the Department of Radiology, The Third Affiliated Hospital of Sun Yat-Sen University, Guangzhou 510220, China.  
E-mail: {zhangxd2, chongyt}@mail.sysu.edu.cn.
- Z. Huang, J. Chen and R. Wang are with the School of Data and Computer Science, Sun Yat-sen University, Guangzhou 510006, China.  
E-mail: {huangzw26, chenjw48}@mail.sysu.edu.cn, wanggruix5@mail.sysu.edu.cn.
- Y. Song is with the School of Systems Sciences and Engineering, Sun Yat-sen University, Guangzhou 510006, China.  
E-mail: songy75@mail2.sysu.edu.cn.

\*. Corresponding author.

<sup>†</sup>. These authors contributed equally.

satisfactory for CT images classification because CT images are fine-grained that have low inter-class variances, and thus are difficult to distinguish [28]. Recently, there are encouraging developments in fine-grained image representation learning methods that have been proven effective in CT image deep learning [23]. More importantly, these methods required only image-level annotations and have been shown able to achieve close accuracy to models trained on refined expert annotations [24].

Generally, these fine-grained image learning methods follow a two-stage strategy that first locates key objects in the images and then discriminates their belonging sub-classes based on the identified objects [22]. One key to the success of these methods is to accurately identify the objects in the images. In consideration that the objects might be of different sizes, Feature Pyramid Network (FPN) method was proposed to recognize objects (sub-images) at different scales with corresponding confidence scores [14]. Though the method has shown great power in several fine-grained image classification datasets [21], existing studies usually extracted the features of the detected sub-images separately without considering connections between sub-images. Therefore, it should be beneficial to extract relations between these sub-images.

Another bottleneck of current deep learning techniques is its lack of interpretability. High interpretability is important in both theory and practice, especially for medical diagnoses that has low endurance to wrong predictions. The interpretability of model has recently been significantly advanced by several studies through visualizing the trained CNN models [25], [26]. The combination of the visualization methods will be essential for constructing an interpretable model for COVID diagnosis.

In this study, we have collected chest CT scans of 88 patients diagnosed as COVID-19 from hospitals of two provinces in China, along with 100 patients infected by bacteria pneumonia and 86 healthy persons for comparison and modeling. To effectively capture the subtle differences in medical images, we have constructed a new deep learning architecture DRENet. For a given CT image slice, we first detected potential lesion regions at different scales by integrating the pre-trained ResNet50 with the FPN network. According to the detected regions, ResNet50 was employed again to extract local features at each region and relational features between regions. These features were then concatenated with global features extracted from the original image, and input to a multiple layer perception (MLP) for image-level prediction. Finally, the prediction over each CT image slice in one patient were aggregated for the person-level diagnoses. By training and validation on the collected dataset, our model was shown to accurately discriminate the COVID-19 patients from the bacteria pneumonia patients with an AUC of 0.95, recall (sensitivity) of 0.96, and precision of 0.79. When integrating three types of CT images, the model achieved a recall of 0.93 with precision of 0.86 for discriminating COVID-19 patients from others. More importantly, our model could extract main lesion features, especially the ground-glass opacity (GGO), which visually assist diagnoses by doctors.

## 2 MATERIALS AND METHODS

Our institutional reviewing board waived written informed consent for this study that evaluated de-identified data and involved no potential risk to patients.

### 2.1 Data acquisition

This study was based on reliable resources provided by the Renmin Hospital of Wuhan University and two affiliated hospitals (the Third Affiliated Hospital and Sun Yat-Sen Memorial Hospital) of the Sun Yat-sen University in Guangzhou. We obtained CT images of totally 88 COVID-19 infected patients, which comprised of 76 and 12 patients from the Renmin Hospital of Wuhan University and the Third Affiliated Hospital, respectively. All COVID-19 patients' nasopharyngeal swabs were subjected to nucleic acid kit lysis extraction and calculation by the respective laboratories. In the tests, the fluorescence RT-PCR was performed to detect the viral nucleic acid sequences, which were then compared with the novel coronavirus nucleocapsid protein gene (nCoV-NP) and the novel coronavirus open reading coding frame lab (nCoV ORFlab) sequence. The patients were selected only when the nucleic acid results were positive and the HRCT images of chest were of acceptable qualities with no significant artifacts or missing images. For comparison, we also retrieved CT underwent chest images of 86 healthy persons and 100 patients with bacterial pneumonia from the Renmin Hospital of Wuhan University and Sun Yat-Sen Memorial Hospital.

For persons in Wuhan, chest CT examinations were performed with a 64-section scanner (Optima 680, GE Medical Systems, Milwaukee, WI, USA) without the use of contrast materials. The CT protocol was as follows: 120 kV; automatic tube current; detector, 35 mm; rotation time, 0.35 second; section thickness, 5 mm; collimation, 0.75 mm; pitch, 1-1.2; matrix, 512×512; and inspiration breath hold. The images were photographed at lung (window width, 1000-1500 HU; window level, -700 HU) and mediastinal (window width, 350 HU; window level, 35-40 HU) settings. The reconstructions were made at 0.625 mm slice thickness on lung settings. These data consisted of only transverse plane images of lung. For persons in Guangzhou, the chest CT examinations were performed with a 64-slice spiral scanner (Somatom Sensation 64; Siemens, Germany). All CT parameters were the same as the above settings except the followings: section thickness, 8 mm, and collimation, 0.6 mm.

### 2.2 Model Architecture and Model Training

We have developed a deep learning-based CT diagnosis system to detect the COVID-19 causing pneumonia and to localize the main lesions. As shown in Fig. 1, the fully automated lung CT diagnosis system was developed by three main steps. First, we extracted the main region of the lung and filled the blank of lung segmentation with the lung itself to avoid noises caused by different lung contours. Then, we designed a Details Relation Extraction neural network (DRENet) to obtain the image-level predictions. Finally, the image-level predictions were aggregated to achieve person-level diagnoses.

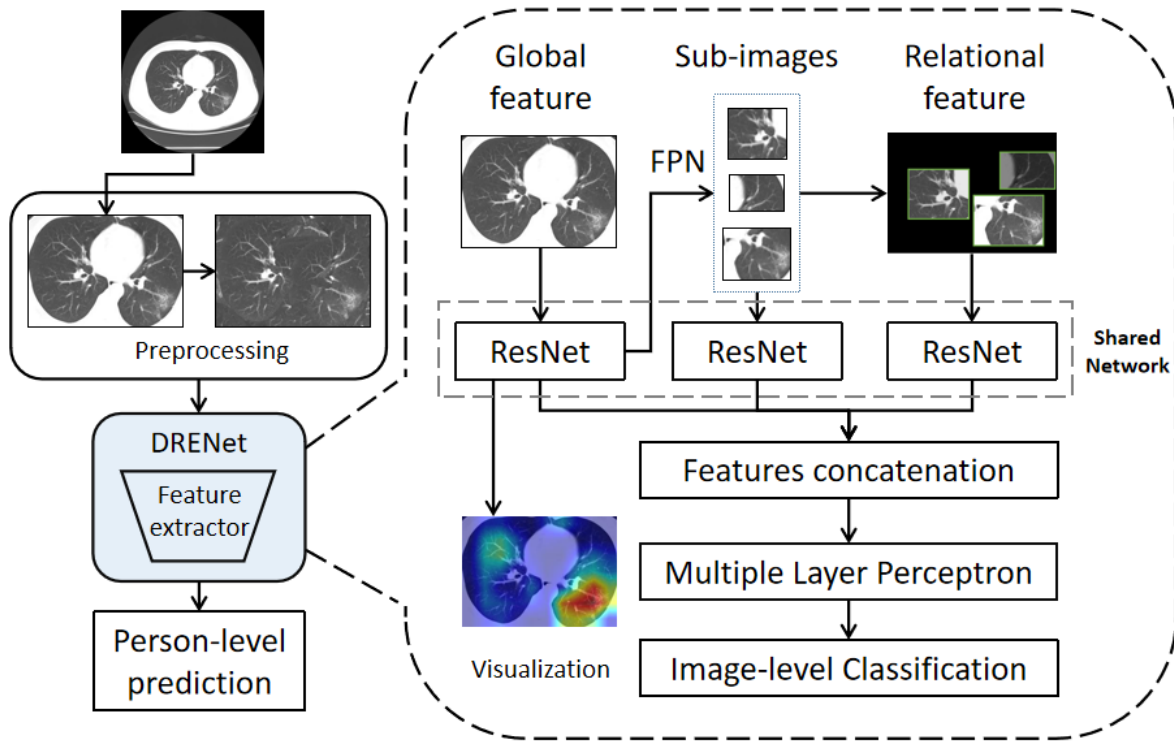


Fig. 1. The proposed training architecture including (1) Preprocessing: the CT images are first preprocessed to remove boundary regions around the lungs, and to further fill the blank regions around two lungs with its rotational lung areas (for model training only). (2) Image-level classifications by DRENet: each CT image is input to the pre-trained ResNet50 to extract global features, from which FPN module is employed to identify top-K lesion regions. According to the top-K regions, the shared ResNet is utilized again to extract local features within the sub-images and relational features between the sub-images. These features are concatenated with the learned global features to input into MLP for the image-level prediction. (3) Person-level prediction: the image-level predictions will be aggregated for person-level prediction.

### 2.2.1 Data preprocessing

As 3D CT images of one patient may contain more than 200 images and neighbored images are highly similar, we only selected 15 representative images equidistantly, i.e. images index  $[i \cdot \text{ntot}/15, i=0..14]$  with  $\text{ntot}$  as the total number images. The removal of redundant images could speed up the calculation and reduce the impact of different numbers of scanned images between hospitals. As many CT images contain incomplete lungs, we further detected lungs through the OpenCV package [12], and removed the images with lung regions occupying less than 50% of the total image. However, there is a problem that the lung contours are substantially different between humans, which may cause deep learning model to over fit the features of lung contour. To solve this problem, we simply filled the blank area of image with its rotational lung areas. Finally, we kept 88 COVID-19 patients with 777 CT images, 100 bacterial pneumonia patients with 505 slices, and 86 healthy people with 708 slices in this study.

### 2.2.2 DRENet

The DRENet was constructed based on the pre-trained ResNet50 that has been proven to be robust to detect objects in images [13]. We further added the Feature Pyramid Network (FPN) [14] to extract the top-K details from each

image. Based on the extracted details, an attention module is coupled to learn the importance [15].

Concretely, as shown in Figure 1, an image is input to ResNet50 to extract the feature map. The feature map is then input to a pooling layer and a dense layer to extract global features, and to the FPN module to extract local details. Inspired by the recent modification of FPN [21] to utilize a top-down architecture for detecting multi-scale regions, we modified the FPN module to identify multi-scale lesion area, where convolutional layers are used at all layers to compute hierarchical features. Moreover, we used feature maps of sizes  $\{14 \times 14, 7 \times 7\}$  corresponding to regions of scales  $\{48 \times 48, 96 \times 96\}$ , emphasizing on small regions because lesion areas are generally small and the use of the large size of feature maps will bring noises to the model. By this way, the FPN will identify important regions with confidence scores.

According to the identified regions, top-K sub-images are then cropped from the original image. At the same time, the original image was scaled to generate a new image by multiplying the corresponding regions of the top-K sub-images with their confidence scores. The regions not including top-K images were set to zero. These K sub-images and the newly generated image were input to ResNet50 to extract respective features.

Finally, we concatenated the features extracted from the original image, top-K sub-images, and the generated image



to a 1-D vector and sent them into a multi layer perceptron (MLP) to predict the image-level state. Based on FPN, our model can not only provide person-level prediction score for the doctor but also interpret the prediction by weighing each pixel of the original image. More details of the implementation and parameters are attached in the Supplementary File.

### 2.2.3 Aggregation

For each patient, the predictions were made on each image slice, and the image-level scored results were aggregated for person-level prediction. Here, the mean pooling was used to integrate the image-level scores into the morbidity of each person as the person-level prediction.

## 2.3 Implementation and evaluation

In our experiments, we fixed  $K = 3$  meaning to extract 3 sub-images from each input image. For practical purposes, we designed the models with two tasks: discriminating COVID-19-infected patients from the healthy people, and separating COVID-19 patients from bacterial patients and healthy controls. For each task, we employed the person-level split strategy following the LUNA16 competition [16] by using random splits of 60%/10%/30% for training, validation, and test sets, respectively. The training set was used to train models, and the validation set was used to optimize the hyper-parameters for the best performance. The final optimal model was independently assessed on the test set. We computed the measured metrics as

$$Accuracy = \frac{TP + TN}{TP + FP + TN + FN} \quad (1)$$

$$Precision = \frac{TP}{TP + FP} \quad (2)$$

$$Recall = \frac{TP}{TP + FN} \quad (3)$$

$$Specificity = \frac{TN}{TN + FP} \quad (4)$$

$$F1 - score = \frac{Precision + Recall}{2} \quad (5)$$

where TP, TN, FP, and FN are the numbers of true positives, true negatives, false positives, and false negatives, respectively. We also computed Area under the receiver-operating characteristics Curve (AUC) by the scikit-learn 0.19 (scikit-learn.org). For the tri-classification task, we computed the precision, recall, F1-score for each type, and reported the average in default.

## 3 RESULTS

### 3.1 Deep Learning Model for COVID-19 Diagnosis

We first performed experiments by discriminating 88 COVID-19 patients and 100 bacteria pneumonia patients, from which 777 and 505 images were collected. By tuning hyperparameters on the 10% validation set, we achieved AUC of 0.91 in the image level, essentially the same as the AUC of 0.92 in the test set. Aggregation of the image-level predictions led to slight increases of AUC values in

person level to 0.93 and 0.95 for the validation and independent test, respectively. The consistent results between the validation and test indicated the robustness of our model. To indicate the effectiveness of our proposed DRENet architecture, we also employed the classical deep residual network (Resnet) [13], DenseNet [17], and VGG16 [18] for comparisons. As shown in Table 1, DRENet achieved the highest AUC score among all methods, VGG16 and ResNet were close, and DenseNet had the lowest score. When measured by F1-score, another balanced measurement, DRENet ranked the first and DenseNet had the lowest score, while ResNet was slightly higher than VGG16. As DRENet was mostly based on ResNet, the improvement should result from the further learning of extracted important regions.

TABLE 1  
Comparisons of different models by person-level performances on the independent test .

Model	AUC	Recall	Precision	Specificity	F1-score	Accuracy
VGG16	0.91	0.89	0.80	<b>0.80</b>	0.84	0.84
DenseNet	0.87	0.93	0.76	0.73	0.83	0.82
ResNet	0.90	0.93	<b>0.81</b>	<b>0.80</b>	0.86	<b>0.86</b>
DRE-Net	<b>0.95</b>	<b>0.96</b>	0.79	0.77	<b>0.87</b>	<b>0.86</b>

Fig. 2A showed the receiver-operating characteristic curves for comparisons with other baseline models. Obviously, DRENet has higher true positive rates at regions of low false positive rate (FPR;0.02), which are also the most important regions because of the much higher number of bacterial pneumonia than COVID-19 patients. At a higher FPR (>0.2), all methods except DenseNet can correctly recognize COVID-19 patients. When using a cutoff of 0.5, the DRENet predictions have one false positive and two false negatives as shown in the confusion matrix (Fig. 2B), corresponding to a precision of 0.79 and a recall of 0.96.

Another advantage of DRENet is its ability to detect potential lesion regions for interpretation. For visualization, we selected two successfully predicted pneumonia patients from the test set (Fig. 3), and showed three slice images with the highest scores for each patient. The detected regions by DRENet contained ground-glass opacity (GGO) abnormality, which has been reported as the most important character for COVID-19 patients by recent studies [9], [10], [11]. To quantify the potential lesion regions, we also drew the heat maps through the Gradient-weighted Class Activation Mapping (Grad-CAM) as proposed by [25]. The visualizations by Grad-CAM were essentially consistent to detect potential lesion regions while providing more information. These findings indicate that DRENet could detect key features. The detected features provide reasonable clues for the judgements, which are especially helpful for diagnoses by doctors.

### 3.2 Deep Learning Model for Pneumonia Three-class Classification

In order for real-world assisted diagnoses in hospitals, we further performed three-class classification experiments by adding pneumonia patients caused by bacteria. To this end, we built a model by the proposed DRENet learning architecture based on 88 COVID-19, 100 bacterial pneumonia patients, and 86 healthy persons, consisted of 777, 505 and

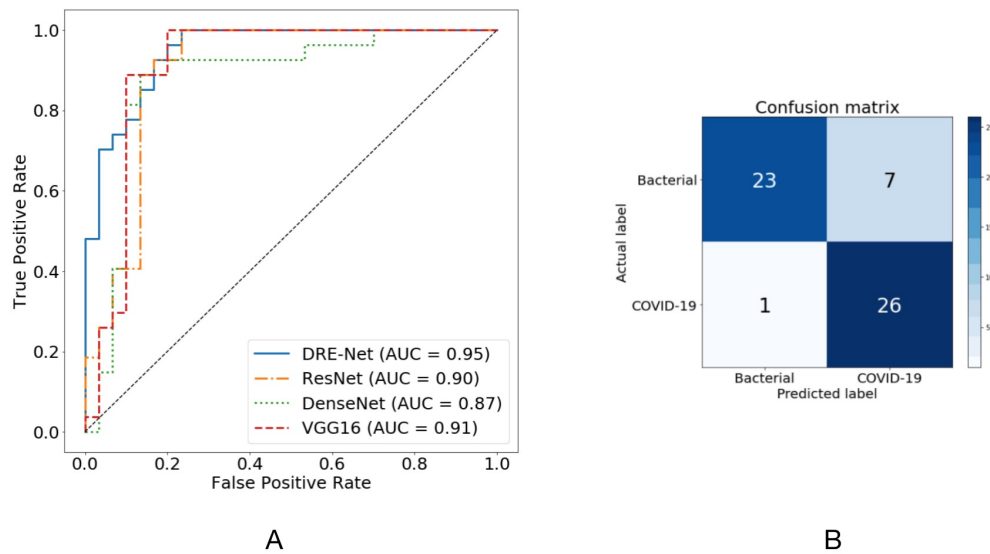


Fig. 2. Performances of different networks on the pneumonia diagnosis with A) Receiver operating characteristic curves for the diagnosis of COVID-19, and B) Confusion matrix of the DRENet on the test set.

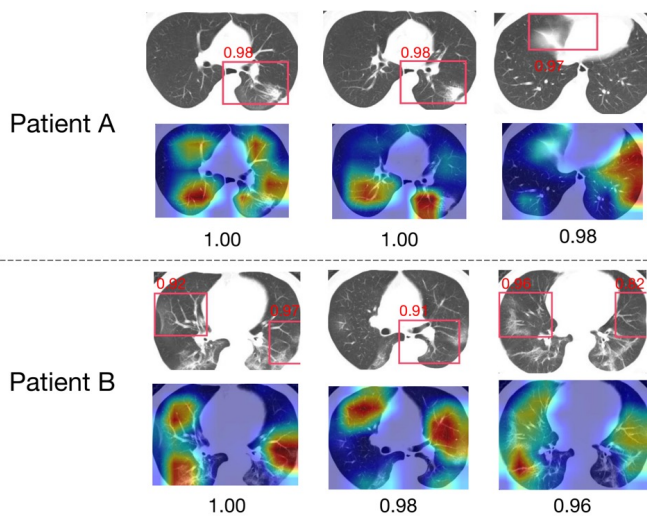


Fig. 3. Visualization of two correctly diagnosed nCoV-19 pneumonia patients. For each patient, we showed the top 3 predicted slices and the extracted details (bounding boxes with red color) with normalized predicted scores above 0.8 (ranging from 0 to 1). Moreover, we also used the method proposed by [25] to draw the heat map.

708 CT images, respectively. As shown in Table 1, DRENet achieved a precision of 0.93 with a recall of 0.93 in average, corresponding to F1-score of 0.93 as well. By comparison, the F1-score of DRENet is 2% higher than the next best ResNet and VGG16. DenseNet performed the worst with F1-score of 0.88. Fig. 4 shows the confusion matrix of the DRENet on the pneumonia three-class classification. We observed that the model can discriminate all healthy persons from pneumonia patients while make only six wrong predictions in classifying the bacterial pneumonia and viral pneumonia (COVID-19). When considering the separation of COVID-19 patients from others, the model achieved a recall of 0.93 and precision of 0.86.

TABLE 2  
Performance comparisons on pneumonia three-class classification task.

Model	Recall	Precision	Specificity	F1-score	Accuracy
VGG16	0.91	0.91	0.91	0.91	0.91
DenseNet	0.88	0.89	0.88	0.88	0.88
ResNet	0.91	0.92	0.91	0.91	0.91
DRE-Net	<b>0.93</b>	<b>0.93</b>	<b>0.93</b>	<b>0.93</b>	<b>0.93</b>

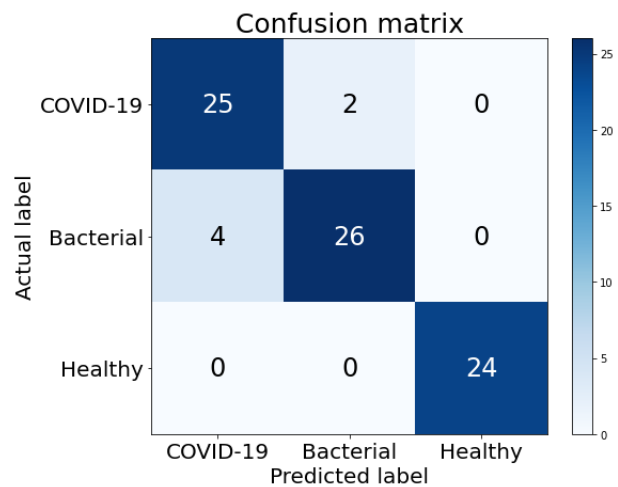


Fig. 4. Confusion matrix of the DRENet on the pneumonia three-class classification.

By examining two COVID-19 patients who were wrongly predicted to be caused by bacteria, we found their respective predicted scores were 0.46 and 0.39 in the patient level. These scores were both marginally lower than the threshold of 0.5. As shown in Fig. 5, although the patient C has a score of 0.46 in the patient level, three most suspected slice images (the highest scores in the image level) all have scores greater than 0.5 in the image level. Therefore, DRENet

could still assist doctors to make correct decisions by visualizing key images in occasionally wrong cases. On the other hand, the patient D of bacterial pneumonia was wrongly predicted as the COVID-19 patient. The misjudgements might be caused by the GGO abnormalities appearing in the patient of bacterial pneumonia for unknown reasons, as shown in the rectangles.

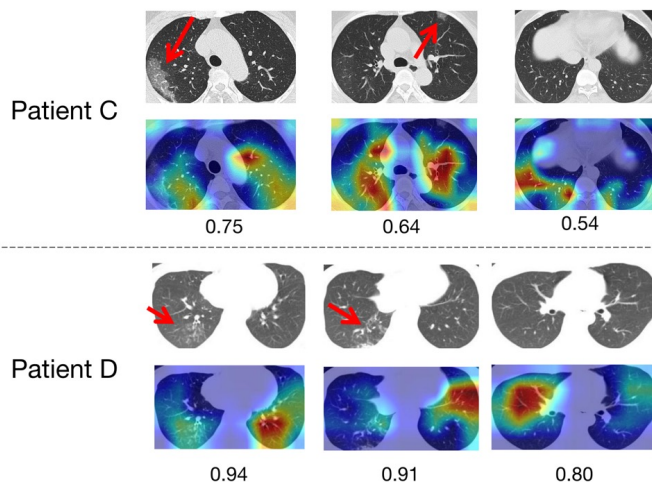


Fig. 5. Visualization of two wrongly predicted cases on the pneumonia classification for A) one patient of bacterial pneumonia wrongly predicted as the COVID-19 patient, and B) one COVID-19 patient wrongly predicted as bacterial pneumonia. Arrows were added by hand to point to regions containing GGO abnormality.

## 4 DISCUSSION

The outbreak of COVID-19 has resulted in a world-wide panic recently. There are no specific signs for the infected patients. Those who have fallen into ills were reported with the ground-glass opacity (GGO). Thus, CT becomes the most convenient and fastest diagnosis approach. However, difficulties were met due to lacks of quantified diagnosis criteria and of experienced radiologists. It is essential to develop a publicly available model to assist the diagnosis by artificial intelligence.

In this study, we have developed a new deep learning architecture to construct the prediction model based on 88 patients diagnosed with the COVID-19, 100 patients infected with bacteria pneumonia, and 86 healthy persons from three hospitals in China. Our models achieved a recall of 96% and a precision of 93% for COVID-19 patients against bacteria pneumonia patients. When training a model to separate three classes simultaneously, the tri-classification model achieved a recall of 93% and a precision of 86% for the COVID-19 patients. Due to the high infectivity of COVID-19 virus, a high recall is essential for correctly recognizing COVID-19 patients to prevent the spreading of virus. The model developed here is appropriate for assisting clinical diagnoses considering the 60-70% recall rate by nucleic acid examinations. More importantly, our method also provides interpretation of the prediction through recognized lesion regions and detailed heat map. Since clinical diagnosis is of

low endurance to wrong predictions, such interpretation is essential for assisting doctors to make decisions.

Since the training data is still a small data, the model can't effectively solve the batch effect to make accurate predictions for other sources of data, a well known problem in AI diagnosis through medical images [CITE]. One possible way for this problem is to accumulate data from multiple hospitals. Alternatively, the model can be fine-tuned or retrained by using data from hospitals that need to use the model.

Additionally, we performed an experiment to distinguish the COVID-19 infected patients from bacterial pneumonia. The independent test indicated a recall of 0.93 and a precision of 0.79 (Table S1). The same recall but lower precision than the tri-class model (recall=0.86) suggests that adding other types might help the training in tasks with small number of samples. Therefore, the performance might be further improved by adding more CT images, or even other types of pneumonia [20].

## 5 CONCLUSION

In conclusion, our study demonstrated the feasibility of a deep learning approach to assist doctors in detecting patients with COVID-19 and automatically to identify the potential lesions from CT images. With the accurate discrimination of the COVID-19 patients, the proposed system may enable a rapid and accurate identification of patients.

There are also several weakness points in our work. One major problem is the dataset. We accomplished the work at the very early stage of the COVID pandemic, where there are only very few samples to build such a deep learning prototype. Secondly, due to the issue of batch effect, our method achieved good results on the datasets from original source data collection hospital but was not able to predict the external data directly. Fortunately, it can be alleviated by finetuning the model with the images from target sources. In the future, we may include a pre-trained model with more image sources for more accurate diagnosis of COVID-19.

## REFERENCES

- [1] Huang, Chaolin, et al. "Clinical features of patients infected with 2019 novel coronavirus in Wuhan, China." *The Lancet* 395.10223 (2020): 497-506.
- [2] WHO website Wm. <https://www.who.int>. Accessed accessed February 5th, 2020.
- [3] Lu R, Zhao X, Li J, et al. Genomic characterisation and epidemiology of 2019 novel coronavirus: implications for virus origins and receptor binding. *The Lancet*. 2020.
- [4] Li Q, Guan X, Wu P, et al. Early transmission dynamics in Wuhan, China, of novel coronavirus-infected pneumonia. *New England Journal of Medicine*. 2020.
- [5] Hui DS, I Azhar E, Madani TA, et al. The continuing 2019-nCoV epidemic threat of novel coronaviruses to global health—The latest 2019 novel coronavirus outbreak in Wuhan, China. *International Journal of Infectious Diseases*. 2020;91:264-266.
- [6] Zhu N, Zhang D, Wang W, et al. A novel coronavirus from patients with pneumonia in China, 2019. *New England Journal of Medicine*. 2020.
- [7] WHO reports. WHONC-ns. <https://www.who.int/emergencies/diseases/novel-coronavirus-2019/situation-reports/> Accessed (Assessed on February 6th, 2020).
- [8] Chu DK, Pan Y, Cheng S, et al. Molecular diagnosis of a novel coronavirus (2019-nCoV) causing an outbreak of pneumonia. *Clinical Chemistry*. 2020.
- [9] Lei J, Li J, Li X, Qi X. CT Imaging of the 2019 Novel Coronavirus (2019-nCoV) Pneumonia. *Radiology*. 2020:200236.

- [10] Shi H, Han X, Zheng C. Evolution of CT Manifestations in a Patient Recovered from 2019 Novel Coronavirus (2019-nCoV) Pneumonia in Wuhan, China. *Radiology*. 2020:200269.
- [11] Song F, Shi N, Shan F, et al. Emerging Coronavirus 2019-nCoV Pneumonia. *Radiology*. 2020:200274.
- [12] Bradschi G, Kaehler A. Learning OpenCV: Computer vision with the OpenCV library. "O'Reilly Media, Inc."; 2008.
- [13] He K, Zhang X, Ren S, Sun J. Deep residual learning for image recognition. Paper presented at: Proceedings of the IEEE conference on computer vision and pattern recognition2016.
- [14] Lin T-Y, Dollár P, Girshick R, He K, Hariharan B, Belongie S. Feature pyramid networks for object detection. Paper presented at: Proceedings of the IEEE conference on computer vision and pattern recognition2017.
- [15] Fu J, Zheng H, Mei T. Look closer to see better: Recurrent attention convolutional neural network for fine-grained image recognition. Paper presented at: Proceedings of the IEEE conference on computer vision and pattern recognition2017.
- [16] LUNA16. <https://luna16.grand-challenge.org/> Accessed (Assessed on February 6th, 2020).
- [17] Iandola F, Moskewicz M, Karayev S, Girshick R, Darrell T, Keutzer K. Densenet: Implementing efficient convnet descriptor pyramids. *arXiv preprint arXiv:14041869*. 2014.
- [18] Simonyan K, Zisserman A. Very deep convolutional networks for large-scale image recognition. *arXiv preprint arXiv:14091556*. 2014.
- [19] Liu X, Faes L, Kale AU, et al. A comparison of deep learning performance against health-care professionals in detecting diseases from medical imaging: a systematic review and meta-analysis. In. Vol 12019.
- [20] E L, Zhao B, Guo Y, et al. Using deep-learning techniques for pulmonary-thoracic segmentations and improvement of pneumonia diagnosis in pediatric chest radiographs. *Pediatr Pulmonol*. 2019;54(10):1617-1626
- [21] Yang, Ze, et al. "Learning to navigate for fine-grained classification." *Proceedings of the European Conference on Computer Vision (ECCV)*. 2018.
- [22] Y. Peng, X. He, and J. Zhao, "Object-part attention model for fine-grained image classification," *IEEE Transactions on Image Processing*, vol. 27, no. 3, pp. 1487-1500, 2017.
- [23] Yan, K., Peng, Y., Sandfort, V., Bagheri, M., Lu, Z., Summers, R. M. (2019). Holistic and comprehensive annotation of clinically significant findings on diverse CT images: learning from radiology reports and label ontology. In *Proceedings of the IEEE Conference on Computer Vision and Pattern Recognition* (pp. 8523-8532).
- [24] Y. Zhou, Y. Zhu, Q. Ye, Q. Qiu, and J. Jiao, "Weakly supervised instance segmentation using class peak response," in *Proceedings of the IEEE Conference on Computer Vision and Pattern Recognition*, 2018, pp. 3791-3800.
- [25] Selvaraju, R. R., Cogswell, M., Das, A., Vedantam, R., Parikh, D., Batra, D. (2017). Grad-cam: Visual explanations from deep networks via gradient-based localization. In *Proceedings of the IEEE international conference on computer vision* (pp. 618-626).
- [26] Zhang, Q., Wang, W., Zhu, S. C. (2017). Examining cnn representations with respect to dataset bias. *arXiv preprint arXiv:1710.10577*.
- [27] Krizhevsky A, Sutskever I, Hinton G E. Imagenet classification with deep convolutional neural networks[C]// *Advances in neural information processing systems*. 2012: 1097-1105.
- [28] Zhao B, Feng J, Wu X, et al. A survey on deep learning-based fine-grained object classification and semantic segmentation[J]. *International Journal of Automation and Computing*, 2017, 14(2): 119-135.



**Shuangjia Zheng** is currently a PhD student in Computer Science and Technology at the Sun Yat-Sen University. His research interests lie in the deep learning, medical imaging, drug discovery and computational biology.



**Xiang Zhang** received the Master's degree from Sun Yat-Sen University, China, in 2014. He is currently a attending doctor in Sun Yat-Sen Memorial Hospital, Sun Yat-Sen University, China. His research interests include the radiomics and deep learning of medical images.



**Jun Shen** Professor, chief physician, doctoral supervisor. "Excellent talents in the new century" of the Ministry of education, and "Pearl River scholars" specially appointed professor. At present, he is the director of the Department of radiology education and research, the director of Radiology, the director of radiology imaging, and the director of nuclear medicine.



**Yunfei Zha** Chief physician, associate professor, director of radiology department, born in 1972, master's supervisor. In 2005, he received a doctor's degree in clinical medicine. He once worked in the post doctoral station of clinical medicine of Sun Yat-Sen University. He presided over 4 scientific research projects, published more than 30 papers, edited 1 monograph and participated in 1 monograph. Presided over one national level continuing medical education project. He served as the young member of Radiology branch of

Chinese Medical Association, vice chairman of Radiology branch of Hubei Medical Association, vice chairman of cancer imaging Committee of Hubei Cancer Association, vice director of quality control center of radiation medicine of Hubei Province, procurement evaluation expert of Hubei Province and Wuhan municipal government, deputy editor in chief of radiology practice, editorial board member of *Journal of practical medical imaging*, *China C Editorial Committee of T and MRI journal*, special editor of *clinical radiology journal*, reviewer of *Journal of Wuhan University (Medical Edition)*. Good at: imaging of vascular disease and skeletal muscle disease



**Ying Song** is a master student in School of Systems Science and Engineering at the Sun Yat-Sen University. His research interests lie in the computer vision and knowledge graph.



**Yuedong Yang** is Professor in the School of Data and Computer Science and National Super Computer Center at Guangzhou, Sun Yat-sen University, China. He received his PhD degree in the computational biology from the University of Science and Technology of China (USTC) in 2006. Dr Yang has published ¿90 publications in high-profile journals that have been cited ¿3500 times, including four ESI highly cited articles. Currently his research group emphasizes on developing HPC and AI algorithms for multi-omics

data integration and intelligent drug design. He is also responsible for constructing the HPC platform for biomedical applications based on the Tianhe-2 supercomputer.